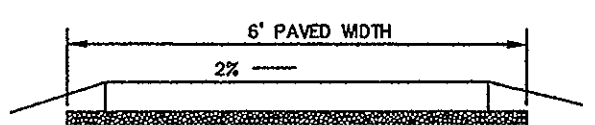
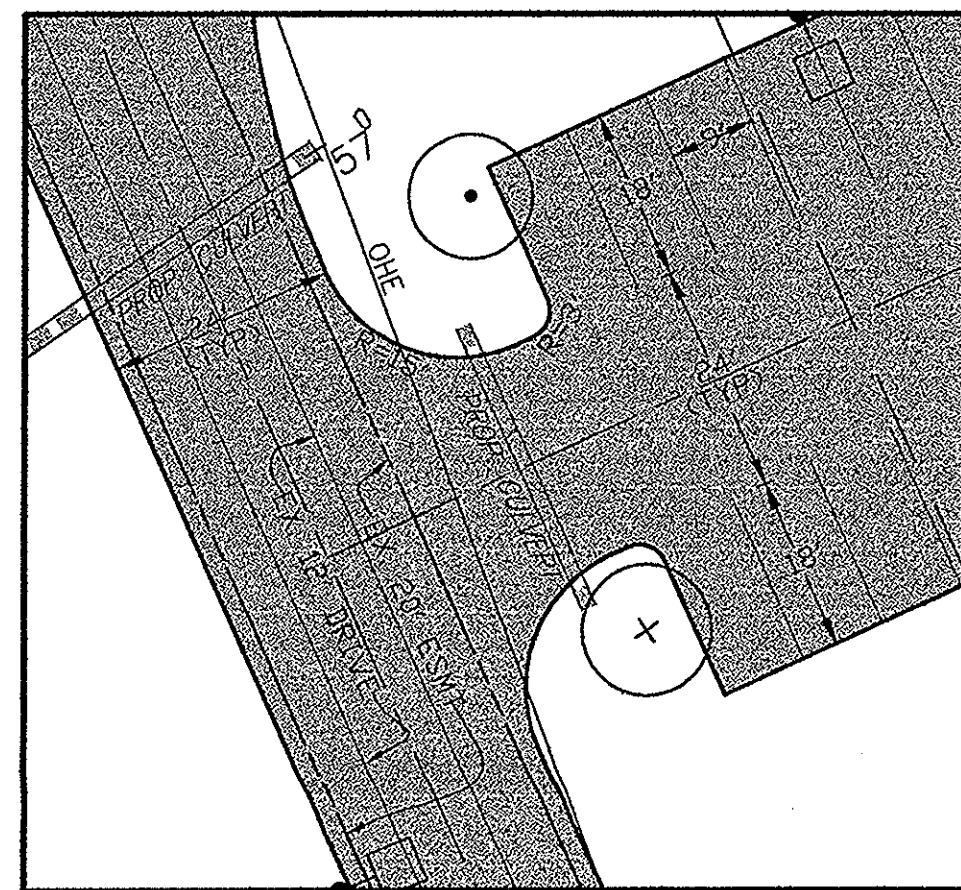


**SIGN DETAIL**  
SCALE: 1" = 4'

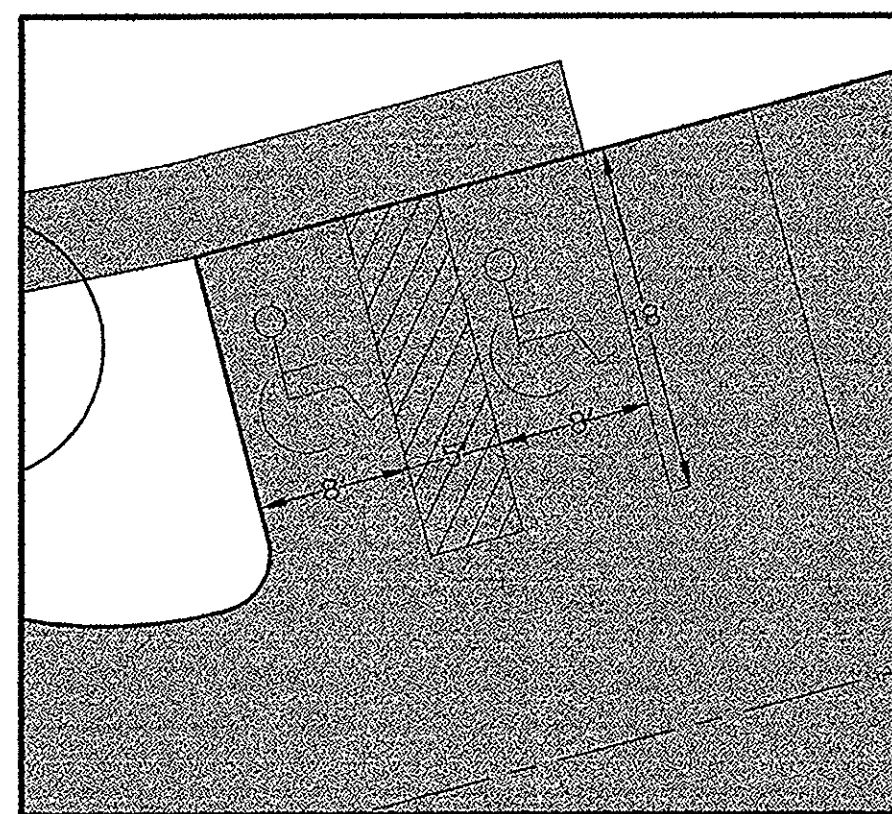


**PATHWAY PAVING SECTION**  
SCALE: NTS

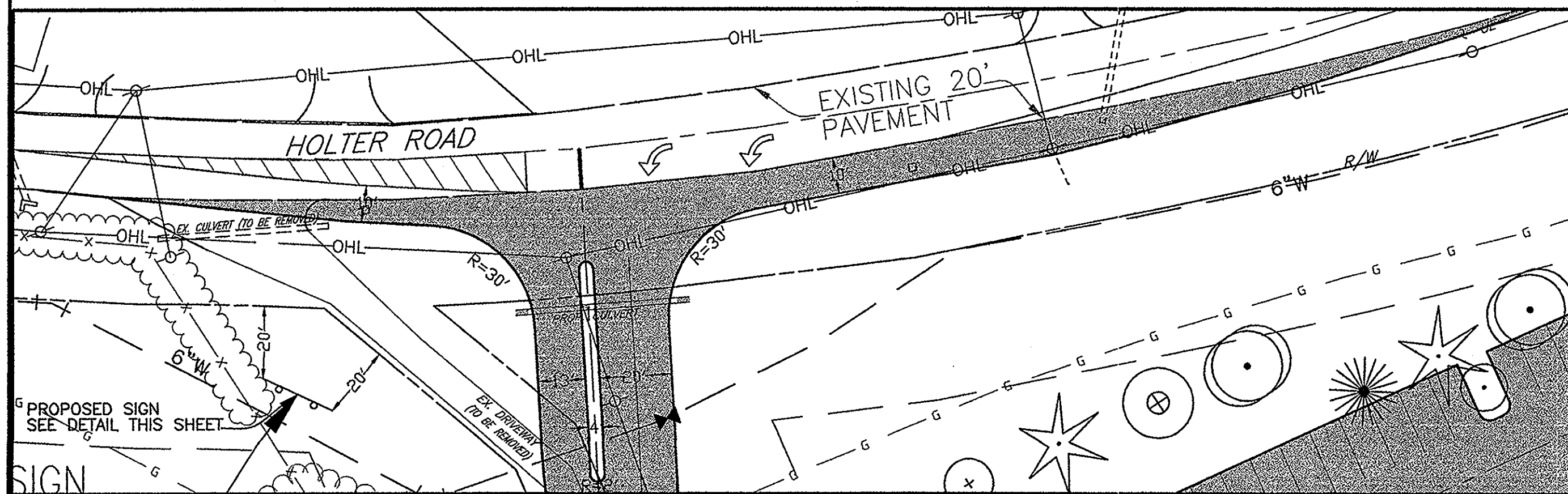
**TYPICAL DIMENSIONS**



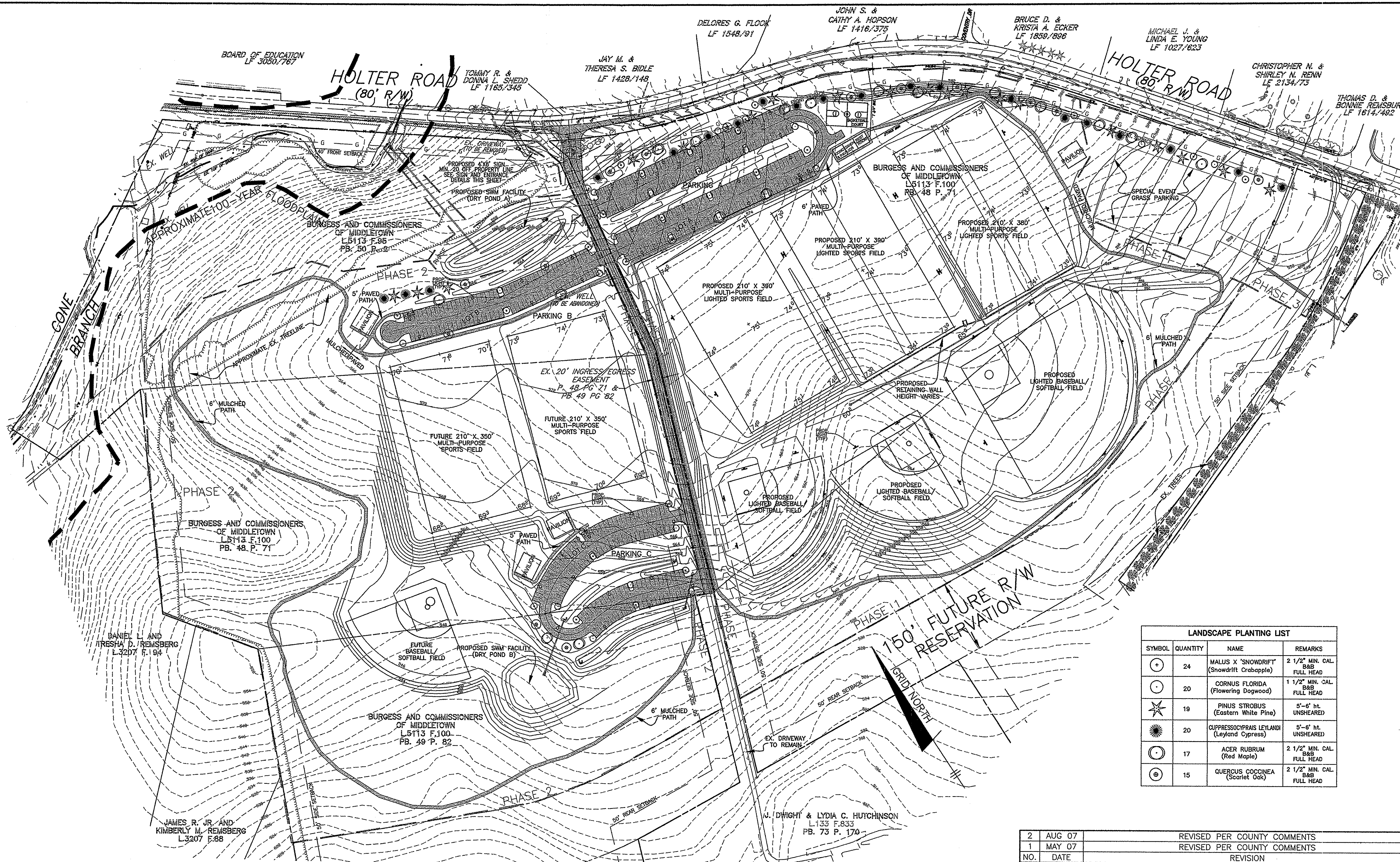
**PARKING AND DRIVE**  
SCALE: 1" = 20'



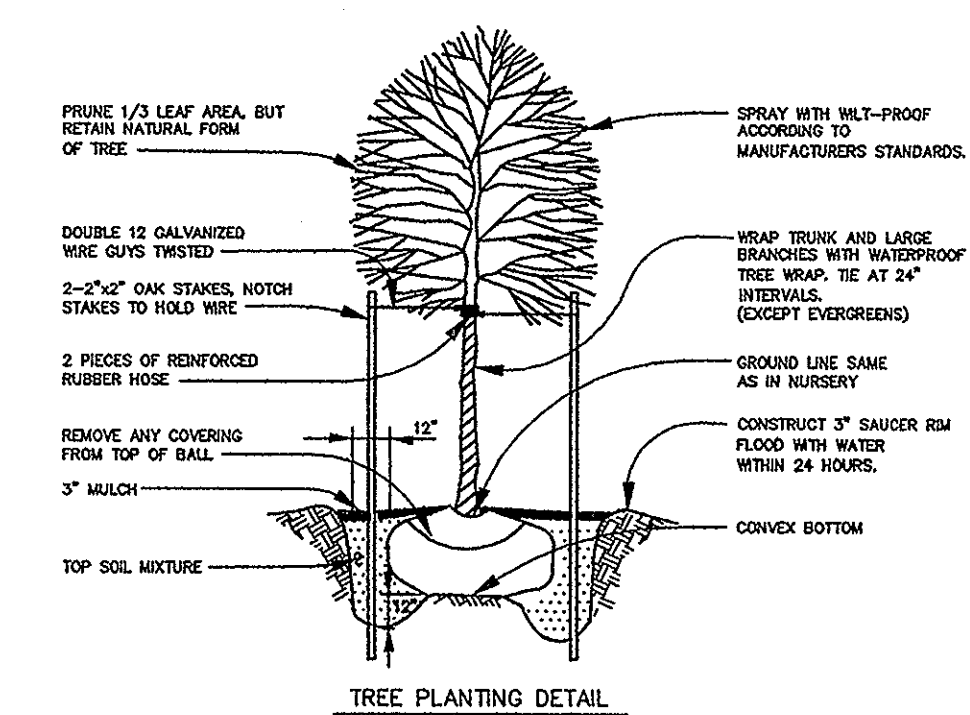
**HANDICAP PARKING**  
SCALE: 1" = 10'



**ENTRANCE - PROPOSED LEFT TURN LANE**  
SCALE: 1" = 30'



**SITE PLAN**  
SCALE: 1" = 100'



**NOTE:**  
1. TREES SHOULD BE PLANTED A MINIMUM OF 6 FEET FROM THE EDGE OF PAVING AND MUST BE A MINIMUM OF 5 FEET FROM ANY STORM DRAIN.

LANDSCAPE PLANTING LIST			
SYMBOL	QUANTITY	NAME	REMARKS
⊙	24	MALUS X 'SNOWDRIFT' (Snowdrift Crabapple)	2 1/2" MIN. CAL. B&B FULL HEAD
⊙	20	CORNUS FLORIDA (Flowering Dogwood)	1 1/2" MIN. CAL. B&B FULL HEAD
⊙	19	PINUS STROBUS (Eastern White Pine)	5'-6' ht. UNSHEARED
⊙	20	CUPRESSOCYPRIS LEYLANDI (Leyland Cypress)	5'-6' ht. UNSHEARED
⊙	17	ACER RUBRUM (Red Maple)	2 1/2" MIN. CAL. B&B FULL HEAD
⊙	15	QUERCUS COCCINEA (Scarlet Oak)	2 1/2" MIN. CAL. B&B FULL HEAD

NO.	DATE	REVISION
2	AUG 07	REVISED PER COUNTY COMMENTS
1	MAY 07	REVISED PER COUNTY COMMENTS
1	DATE	REVISION

**BENCHMARK ENGINEERING, INC.**  
ENGINEERS • LAND SURVEYORS • PLANNERS

8480 BALTIMORE NATIONAL PIKE & SUITE 418  
ELLCOTT CITY, MARYLAND 21043  
PHONE: 410-465-6105  
FAX: 410-465-6644

6 WEST MAIN STREET  
MIDDLETOWN, MD 21769  
PHONE: 301-371-3605  
FAX: 301-371-3606

E-MAIL: [bel@benchmark-engineering.com](mailto:bel@benchmark-engineering.com)  
WEB: [www.benchmark-engineering.com](http://www.benchmark-engineering.com)

<b>OWNER:</b> TOWN OF MIDDLETOWN MUNICIPAL CENTER 31 WEST MAIN STREET MIDDLETOWN, MD 21769 301-371-6171	<b>PROJECT:</b> <b>REMSBERG PARK</b>
<b>LOCATION:</b> 7390 HOLTER ROAD FREDERICK COUNTY, MARYLAND	<b>TITLE:</b> DETAILED SITE PLAN AND LANDSCAPE PLAN
<b>DATE:</b> JANUARY 2007 NOV 2007	<b>PROJECT NO.:</b> 1969
<b>DES: AAM</b> <b>DRAFT: AAM</b> <b>CHECK: CAM</b>	<b>SCALE:</b> AS SHOWN <b>DRAWING</b> 2 <b>OF</b> 4